

PennWood
Cabins



Custom Cabins

On-Site Builds & Prebuilt Units

Quality

YOU CAN
TRUST



www.pennwoodcabins.com

814-967-2002

CONTENTS

On Site Builds	5
Prebuilt Units	14
Options/Upgrades.....	32

Pennwood Cabins is a family-owned and operated company that builds customizable log-sided cabins. We strive to provide our customers with high-quality, durable, and beautiful cabins that meet their unique needs. Our team consists of expert architects, designers, and builders who work together to bring our customers' visions to life. We take pride in our attention to detail and our commitment to customer satisfaction. Let us help you create your dream cabin today.

YOUR CABIN STORY

Starts here...

Pennwood Cabins recognizes the diverse needs of our customers. We understand that our clients buy our cabins for various reasons. Therefore, we strive to offer a variety of packages that cater to your specific needs and budget. Rest assured that we will not compromise on quality or craftsmanship, regardless of the budget requirements.

Vacation Property

Are you looking for a cozy home away from home to escape the 9 to 5 on holidays and weekends? Pennwood Cabins' customization offers a variety of sizes and styles and are an investment in your happiness and peace of mind for years to come.

Personal Property

This is your opportunity to write your own cabin story. Whether you're looking to downsize for your golden years, reunite with nature and a sense of adventure, or move to that property with a view that you've always dreamed of, Pennwood Cabins has a cabin to fit your needs.

Rental Property

If you're looking for a way to share the natural beauty of a secluded getaway or build a relaxing resort, our cabins offer you a profitable rental alternative. Online platforms like Airbnb and Vrbo make vacation rentals easier than ever to attract potential guests and generate a steady cash flow.

Your story goes here...

Purchase Your Dream Cabin in 5 Easy Steps

You Plan Plan your dream cabin from a variety of styles and floor plans. Don't see what you need? Contact our sales team at Pennwood Cabins for a quote on custom options that meets your needs.

You Choose Choose from a variety of interior and exterior colors and materials, flooring, counter tops, cabinets, and fixtures to create the style you've always dreamed of.

You Prepare All that's left is to prepare your site for the delivery of your dream cabin. We will provide you with details and steps to get your site ready for a smooth delivery.

We Build While you are preparing your site, our team of craftsmen will be busy building your cabin. Our high-quality materials and standards ensure your cabin will meet your expectations.

We Deliver After your custom cabin has been built, Pennwood Cabins' delivery team will coordinate with you to deliver your cabin anywhere within the continental United States.

Choose your Package

- Shell:** the shell option gives you the flexibility to finish the interior independently with lower up-front costs. (See page # for complete feature list).
- Key Entry:** key entry options are move-in ready for you to move in your appliances and furniture. (See page # for complete feature list).
- Custom:** If you are looking for a shell with electric and plumbing, but want to finish the rest of the interior? No problem! Contact our sales team for a quote that fits your purpose and budget.

ONSITE BUILDS

Onsite builds are cabins that are primarily built at your site directly on the foundation. Walls and portions of the cabin may be built in the warehouse and delivered to the site, but the main construction happens on your property.



SALMON RUN



Introducing the Salmon Run *Showstopper*

Looking for the perfect escape from cabin fever? Look no further than the Salmon Run. With ample windows offering stunning scenic views and plenty of natural light, this luxurious cabin is sure to delight. The open floor plan and loft add to its appeal, making it an ideal retreat for those seeking a touch of luxury.



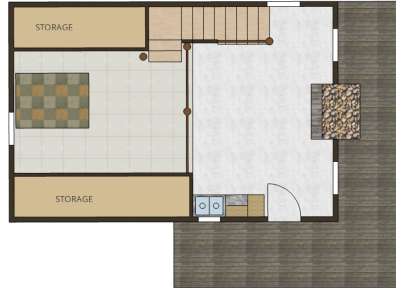
FLOOR PLANS

Main



20' x 30'

Loft

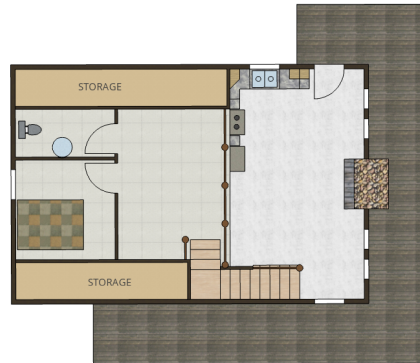


Main

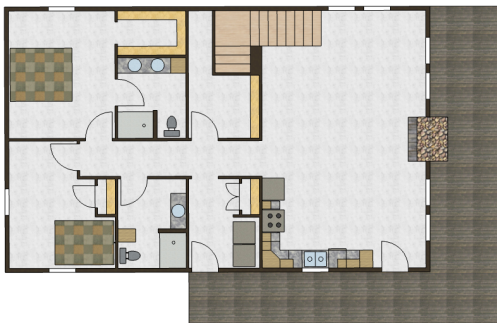


24 x 36

Loft

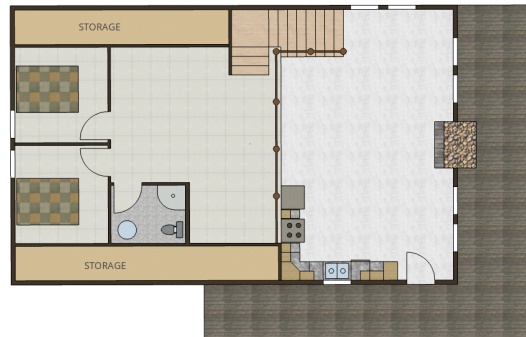


Main



30' x 48'

Loft



EAGLE'S NEST



Introducing the Eagle's Nest

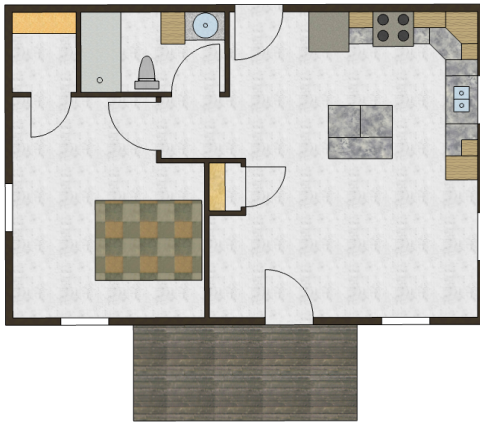
Airy and Light

The Eagle's Nest custom cabin is a true gem of our cabin collection. Every detail has been carefully crafted to create an ideal blend of traditional cabin style and modern conveniences. From the beautiful gabled porch roof to the inviting windows, the cabin offers plenty of natural light and uninterrupted views of the surrounding landscape. With an open floor plan, there's plenty of space to relax and take in the scenery.

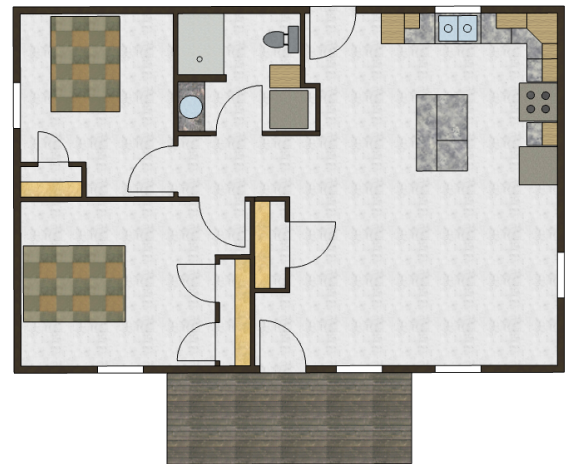


FLOOR PLANS

20' x 30'
1 Bedroom 1 Bathroom



24' x 36'
2 Bedroom 2 Bathroom



30' x 40'
3 Bedroom 2 Bathroom



GRIZZLY TRACK



Introducing the Grizzly Track Cabin *Impressive and Versatile*

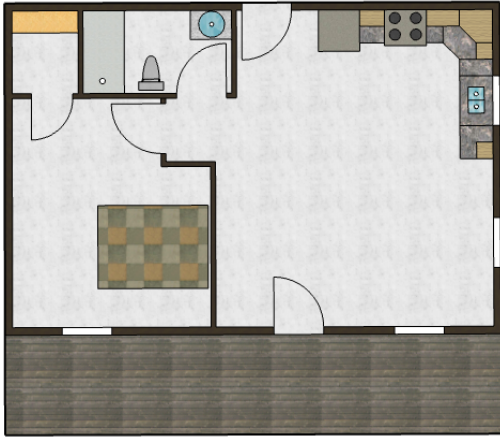
Make a statement with our Grizzly Track cabin. This gorgeous model's open design and full-length porch provide ample space for family and friends. Whether you're looking to impress in the city or relax in nature, the Grizzly Track is a versatile and elegant choice.



FLOOR PLANS

20' x 30'

1 Bedroom 1 Bathroom



26' x 40'

2 Bedroom 2 Bathroom



30' x 40'

3 Bedroom 2 Bathroom



On Site Build Prices

Shell Package

- Built on treated 4x6 skids
- Flooring: 3/4" weather shield OSB glued and nailed
- Walls: framed with 2x4 or 2x6 studs 24" on center (adapted for code), purlins 24" apart, moisture barrier
- Outside walls: 7/16" OSB, house wrap, log siding stained to color of your choice
- Stain log siding: 6-year maintenance free warranty
- Exterior doors: vinyl white
- Windows: double paned 2x3 or 3x3 white
- Roof: 2x4 or 2x6 rafters 24" on center (adapted to code), purlins 24" apart, moisture barrier
- Sheet metal roof: 18 color options
- Ceiling insulation: R14 2" thick closed cell spray foam (for moisture and condensation)

Miles	Single Story	With a Loft
0-200 mi.	\$75	\$85
201-300 mi.	\$90	\$100
301-400 mi.	\$105	\$115
401-500 m.	\$120	\$130

To calculate a **starting estimate** price for your home

1. Determine your distance from our Workshop in Centerville, PA
2. Choose single story or with a loft
3. Calculate: length x width x price

Note: Price does not include customization or upgrades
This is not a binding contract and may be subject to change

Request a detailed Quote



On Site Build Prices

Key Entry Package

In addition to the shell...

- Floor insulation available: closed cell spray foam recommended no less than 2"
- Wall insulation (optional): closed cell spray 2" (R14 value) or fiberglass (R13, R19, or R21 also available)
- Wall covering: 6" pine paneling (stain color options)
- Trim: 1x4 (stain color options)
- Floor covering: vinyl floating flooring (color options)
- Bathroom/s: 36" walk in shower, toilet and pedestal sink
- Kitchen: 7' straight section of cabinets in natural, rustic or hickory stain cabinets, single bowl sink, counter tops of custom epoxy design (3 options)
- Electric: 100 or 200 amp service box, GFI outlets at kitchen and bath vanity, outlets every 8-12 feet, 2 recessed lights in each bedroom, 6-10 recessed lights in kitchen/living area (depending on floor plan), bathroom exhaust fan, and 220 kitchen stove outlet
- Plumbing: inlet water line, gray water, sewer is stubbed out on an outside wall for final connection (we do not make final connection), water lines are connected and pressurized before hook up
- Water heater: gas or electric on demand
- Heat/AC: mini split units (not included in square foot price).

Miles	Single Story	With a Loft
401-500	\$200	\$225
301-400	\$190	\$215
201-300 mi.	\$175	\$200
0-200 mi.	\$160	\$185

To calculate a **starting estimate** price for your home

1. Determine your distance from our Workshop in Centerville, PA
2. Choose single story or with a loft
3. Calculate: length x width x price

Note: Price does not include customization or upgrades
This is not a binding contract and may be subject to change

Request a detailed Quote



PREBUILT UNITS

Our warehouse will construct cabins up to 15 feet wide, which will then be shipped to your desired location. Before the cabin can be shipped, it is important that you prepare the foundation and hook-ups at your site.





COUGAR'S PAW



Introducing the Cougar's Paw Model

A Spacious Living Solution

Looking for a cozy yet roomy living space? Look no further than the Cougar's Paw model. Featuring an included porch with an overhead gable, this model is perfect for adding loft space – a great way to extend the living space. Our 1 and 2-bedroom floor plans offer ample space to fit your needs. What's more, with our personalized trim options, each construction boasts a unique look that's sure to impress.



12' and 15'-wide options also available

FLOOR PLANS



14' x 30'
1 Bedroom 1 Bathroom



14' x 40'
1 Bedroom 1 Bathroom



14' x 48'
2 Bedrooms 1 Bathroom



ELK'S RIDGE



Introducing the Elk's Ridge Model

A Study in Simple Elegance

Experience the understated charm of our 1 or 2-bedroom models that exude a spacious vibe. The common living area is perfect for a cozy, yet elegant feel. And if you want to add some extra flair, consider installing dormers to enhance its overall appeal.



FLOOR PLANS

14' x 30'

1 Bedroom 1 Bathroom



14' x 40'

1 Bedroom 1 Bathroom



14' x 48'

2 Bedrooms 1 Bathroom



12' and 15'-wide options also available

HAWK'S NEST



Discover the Hawk's Nest Model *A Living Space for the Whole Family*

Experience the warmth and comfort of our 1 and 2-bedroom Hawk's Nest models. Enjoy the open communal space, complete with an expanded gathering place, an expansive porch. A bay window provides lots of light and sunshine, perfect for spending quality time with your loved ones.



FLOOR PLANS



14' x 30'

1 Bedroom 1 Bathroom



14' x 40'

1 Bedroom 1 Bathroom



12' and 15'-wide options also available

14' x 48'

2 Bedrooms 1 Bathroom



LAZY BEAR



Discover the Lazy Bear Model

Versatile and Cozy Living

Looking for a comfortable and adaptable living space? The Lazy Bear Model is the perfect solution! With two unique options, the 1-bedroom model features an open living area, while the 2-bedroom model includes a galley kitchen and combined living/dining space. A cozy porch is nestled into the creative design.

FLOOR PLANS

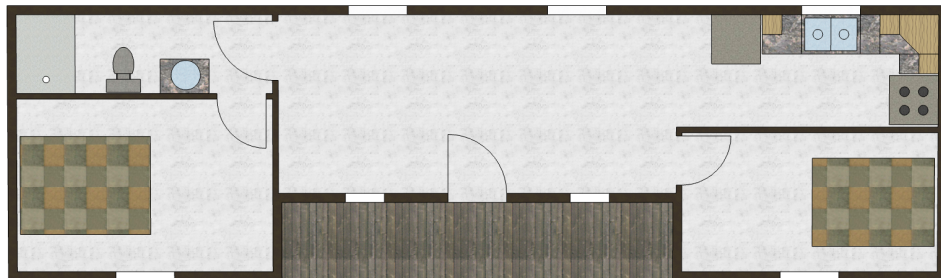


*12' and 15'-wide
options also available*

14' x 40'
1 Bedroom 1 Bathroom



14' x 48'
2 Bedrooms 1 Bathroom



MOOSE TRACKS



The Moose Tracks

Top Selling Model for a Reason

Moose Tracks is the perfect blend of family friendly and entertainment ready. Its full-length porch combines outdoor comfort and expands living spaces. Thanks to its spacious design, even smaller models can accommodate two bedrooms.



*12' and 15'-wide
options also available*

FLOOR PLANS

14' x 30'
1 Bedroom 1 Bathroom

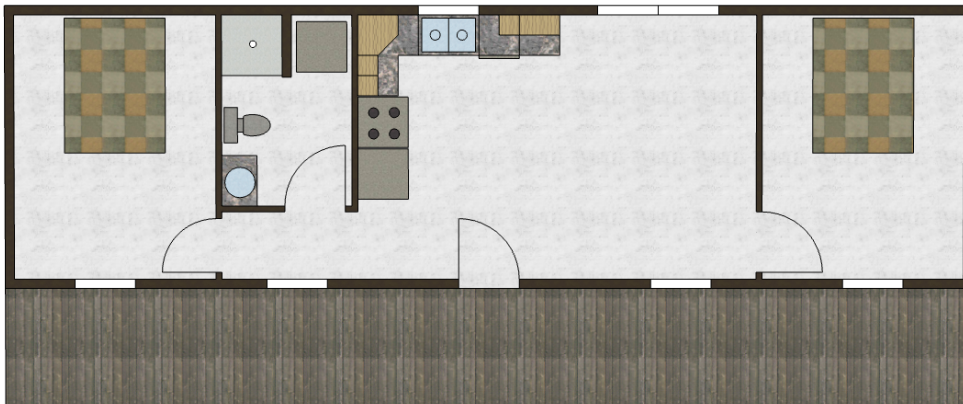


T Addition
options are available
for all of our cabins!

14' x 40'
2 Bedroom 1 Bathroom



14' x 48'
2 Bedrooms 1 Bathroom



FOX TAIL



Introducing the Fox Tail *The Money Maker*

The Fox Tail is the perfect getaway cabin. With a simple, yet elegant design, it boasts an extended porch that's perfect for outdoor entertaining and taking in breathtaking sunsets. This model is also a great option for rental properties and campsites.



FLOOR PLANS



12' and 15'-wide options also available

14' x 30'
1 Bedroom 1 Bathroom



14' x 40'
1 Bedroom 1 Bathroom



14' x 48'
2 Bedrooms 1 Bathroom



TURKEY FEATHER



Presenting the Turkey Feather *Simple and Elegant Design*

The Turkey Feather is a versatile and elegant structure that can be dressed up or down to suit your needs. Its modest design is perfect for a cabin in the woods or a tiny home. The full-length porch expands the living area, creating an inviting outdoor space for relaxation and entertainment.





FLOOR PLANS

15' x 30'

1 Bedroom 1 Bathroom



15' Wide Options Only
4' Wide Porch

15' x 40'

2 Bedrooms 1 Bathroom



15' x 48'

2 Bedrooms 1 Bathroom



Prebuilt Unit Prices

Shell Package

- Built on treated 4x6 skids
- Flooring: 3/4" weather shield OSB glued and nailed
- Walls: framed with 2x4 or 2x6 studs 24" on center (adapted for code)
- Outside walls: 7/16" OSB, house wrap, log siding stained to color of choice
- Stain log siding: 6-year maintenance free warranty
- Exterior doors: vinyl white
- Windows: double paned 2x3 or 3x3 white
- Roof: 2x4 or 2x6 rafters 24" on center (adapted to code), purlins 24" apart, moisture barrier
- Sheet metal roof: 21 color options
- Ceiling insulation: R14 2" thick closed cell spray foam (for moisture and condensation)

To calculate a **starting estimate** price for your home

1. Calculate length x width x \$65.00
2. Add delivery charges (\$ 12per mile - one way)

Note: Price does not include customization or upgrades
This is not a binding contract and may be subject to change

Request a detailed Quote



Prebuilt Unit Prices

Key Entry Package

In addition to shell...

- Floor insulation available: closed cell spray foam recommended no less than 2"
- Wall insulation (optional): closed cell spray 2" (R14 value) or fiberglass (R13, R19, or R21)
- Wall covering: 6" pine paneling (stain color options)
- Trim: 1x4 (stain color options)
- Floor covering: vinyl floating flooring (color options)
- Bathroom/s: 36" walk in shower, toilet and pedestal sink
- Kitchen: 7' straight section of cabinets in natural, rustic or hickory stained cabinets, single bowl sink, counter tops of custom epoxy design (3 options)
- Electric: 100 or 200 amp service box, GFI outlets at kitchen and bath vanity, outlets every 8-12 feet, 2 recessed lights in each bedroom, 6-10 recessed lights in kitchen/living area (depending on floor plan), bathroom exhaust fan, and 220 kitchen stove outlet
- Plumbing: inlet water line, gray water, sewer is stubbed out on an outside wall for final connection (we do not make final connection), water lines are connected and pressurized before hook up
- Water heater: gas or electric on demand
- Heat/AC: mini split units

To calculate a **starting estimate** price for your home

1. Calculate length x width x \$120.00
2. Add delivery charges (\$ 12 per mile - one way)

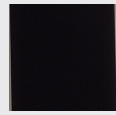
Note: Price does not include customization or upgrades
This is not a binding contract and may be subject to change

Request a detailed Quote

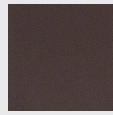


Options

Metal Roof



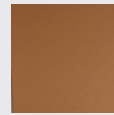
Black



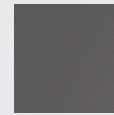
Bronze



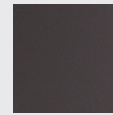
Brown



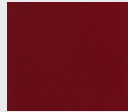
Copper



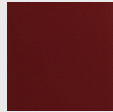
Slate



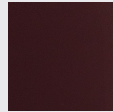
Charcoal



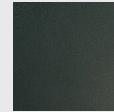
Crimson



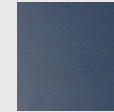
Red



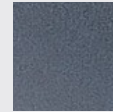
Burgundy



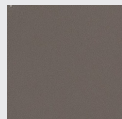
Ivy



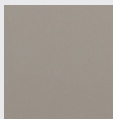
Heron Blue



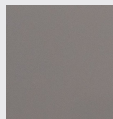
Ocean Blue



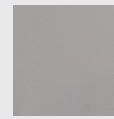
Clay



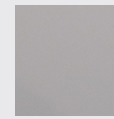
Light Stone



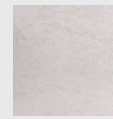
Ash Gray



Bone White



Brite White



Galvalume

Vinyl Siding

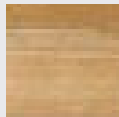


Cedar



Smoke

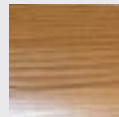
Stained Siding



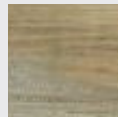
Natural



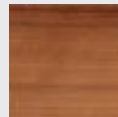
Caramel



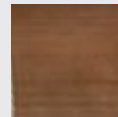
Cedar



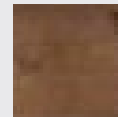
Smoke



Teak



Butternut

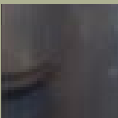


Dark Oak

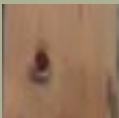
Interior Stain



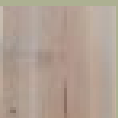
Clear



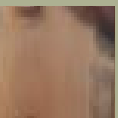
Charcoal



Jacobean



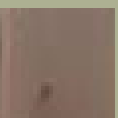
Gray
Cloud



Early
American

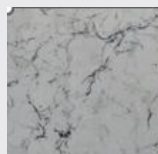


Bleached
Walnut

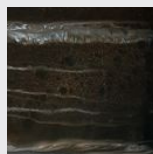


Medium
Gray

Counters



White Marble



Black Carrera
Marble



Carrera Marble



Hickory Kitchen



Pine Kitchen

Upgrades



Dormers: \$1800

Railings: \$30 per linear foot

Door Upgrade



White
to
Mohagany
finish

Window Upgrade



White
to
Bronze

Scan for more
customization options



Delivery Preparation

Preparing for Your New Cabin

Receiving a new cabin is an exciting event that necessitates ample preparation. While we work diligently to construct your cabin, there are several tasks you should complete in anticipation of its delivery.

1. Inspect your site for soil conditions and drainage to insure it meets all local building codes and regulations.
2. Obtain all permits and approvals from authorities.
3. Level the ground and prepare your foundation. Be sure to speak with Pennwood Cabin's team to make sure all cabin needs are met.
4. Arrange for utilities, electricity, water and sewage.
5. Ensure that there is proper access to the property for construction vehicles and pathways to properly access the structure site.
6. Plan your landscaping around the cabin site considering privacy, aesthetics and environmental impact, like erosion.
7. Implement any measures needed for erosion and/or water runoff.
8. Remove debris and/or waste for a clean and safe site ready for installation.
9. Conduct a final inspection to ensure everything is in order before installation begins.

Our Commitment

Quality Construction

Our philosophy on constructing cabins is simple: precision, protection, and purpose. Regardless of the season, our spacious warehouse enables us to construct your prebuilt cabins without worrying about the weather.

Whether you're buying a prebuilt cabin or onsite build, we deliver quality workmanship quickly. Our ultimate goal is to provide you with a cabin that will stand the test of time and create lasting memories for years to come.

Dependable Delivery and Installation

Move-in day is the culmination of an exciting journey for prebuilt and onsite cabin buyers. You'll witness your cabin come to life right before your eyes.

Our primary objective is to build or deliver and install your cabin safely and efficiently, making this step an enjoyable experience for everyone.

Lasting Memories

After the cabin is fully assembled, it's all yours to enjoy for many years to come. Whether it's your full-time residence, vacation home, or rental, you'll love spending time in these charming custom cabins. Once your friends see it, they'll be raving about it too! Our ultimate goal is to provide a comfortable and serene environment where you can truly live your best life or make a sustainable income.





11507 Lebeouf Trail Rd.
Centerville, PA 16404

www.pennwoodcabins.com

814-967-2002



Get a free quote!

